

Network Site Assessment

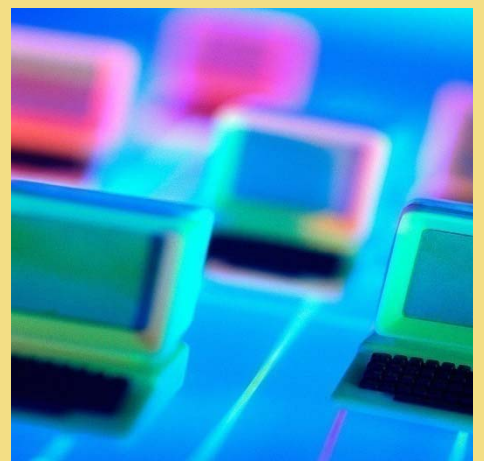
It's like a "home inspection" on your computer network

GEEK SPEAK

- **Network & Server Analysis**
 - Diagram the entire network
 - Internet connectivity
 - Server configuration
 - Disk space, memory, utilization
- **Analysis of each workstation**
 - Hardware
 - Software installed & licenses
 - Memory
- **Short- and long-term recommendations**
- **Complete documentation of our findings**

REAL SPEAK

- How is your system set up?
- Speed of your Internet connection (are you getting your money's worth from your Internet provider?)
- Create a blueprint of your system so any technician can quickly figure out your stuff
- What software programs are installed and are your licenses current?
- Find out what can be fixed without purchasing new stuff
- Age & memory capacity of computers
- How vulnerable is your network to viruses & spam?
- Is the antivirus software up to date?
- Start planning for what to do in case of a disaster
- Suggestions that won't break the bank



For more information on IT services, please call
Laura Evans at 970.488.1058 | Sheri Giles at 970.488.1063

Northern Colorado
www.itxfc.com
970.282.7333

ITX
INFORMATION TECHNOLOGY EXPERTS, Inc.